



Meadows Newsletter

Issue 8

12th May 2023

The Meadows
Primary School

Forthcoming dates

18/5/23	Seeing is Believing – Family Learning C14 2pm
24/5/23	Seeing is Believing – Family Learning C12 9-10am
29/5/23–5/6/23	Half Term
15/6/23	Seeing is Believing – Family Learning C13 2 pm
22/6/23	Owls Class Music Concert at The Victoria Hall, Hanley
28/6/23	Sports Day
24/7/23	Last day of term
25/7/23	INSET

Over the past few weeks, there have been so many things to celebrate as a school and a nation. I hope you have had the opportunity to make the most of the two bank holidays we have had and have enjoyed the many exciting events taking place to celebrate King Charles's coronation, which was a historic moment in the life of our country.



It has been wonderful to hear from the children about the different ways they have celebrated, including family parties or tea parties in the community. We enjoyed welcoming you to celebrate with us at Leycett and we hope you enjoyed it too. It was great to see so many of our families socialising together on this informal occasion. I would like to express my gratitude to the wonderful Coops family who made all of the delicious treats for us. The children enjoyed devouring the leftovers on Friday too! We really appreciate all the time and

effort they put into making the fantastic cakes. Also, a huge thank you to our small dedicate team of Y5/6 children and our fantastic staff too for their efforts in organising the event and being such good sports. The children certainly took great satisfaction in soaking teachers in the stocks (as did some of the parents 😊).

The celebrations continue today for our Y6 children, who have completed the last of their Statutory Assessment Tests. Each year, there is always a lot of press at this time regarding SATs, the rationale for them and the impact that they have on our school communities, and this week has been no different. There have been many posts on social media from teachers, headteachers, parents, pupils, politicians etc.

Amongst this media whirlwind, I want to shine the light on our fantastic pupils. Over the years, I have seen them work incredibly hard and push themselves to succeed and this week has been no different. They have been amazing. In school, they have shown good humour, determination and resilience. They have handled the pressure that comes with any tests we face brilliantly for such young children. I want to share my gratitude for the care and support they have received from their families at home and from our wonderful staff too, in particular Miss Parry and Mrs Magee. Your support has had such a positive impact on the children and their attitudes this week are a testimony to this. These tests show a snapshot of what they have learnt and how much they have remembered, they don't show the full picture. We still have lots of learning to do before the end of the term, but I know the attitudes you have displayed this week are a clear indication of how secondary ready you are. Well done. 😊



The Year 6 children have been supported throughout the week by their friends and teachers in other year groups and classes too, which must also be celebrated. One of our Secrets of Success at The Meadows is 'Understanding Others', and this is something our school community has done so brilliantly this week. They have supported the Y6 with messages of good luck. But they have also been incredibly understanding as we have had to have more flexible routines to accommodate the administration of the SATs. Some of the children have been learning off site at times, engaging in enriching opportunities linked to their subjects. More news on that to follow below... Well done to the whole of The Meadows community.

Next week it will be the turn of our lovely Year 2 pupils to complete their SATs. Whilst they are delivered differently to the Y6 assessments, which are externally moderated, we will continue to support and encourage them along the way too. All the best children – we are proud of you.

Class Updates

Here are a few updates about some of the exciting learning that has been taking place over the past few weeks in school:

Foxes and Badgers have continued their learning on Space across their provision. In Science, they led experiments to make rockets and launch them. WOW!



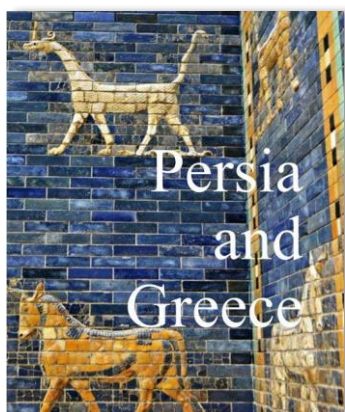
The **Kingfishers** have been exploring problem solving in Maths. They have had to apply their knowledge of addition and subtraction when answering word problems, explaining their reasoning. They have certainly been determined like our Power Maths character Dexter!



The **Owls** class had a fantastic time at Forest School on Thursday. They are very grateful to Seabridge Primary for allowing them to use their beautiful site. The children had opportunities to build structures using natural resources, learn basic knot-tying, create hapa zoom, develop their friendships and work together as a team. They all embraced the Forest School ethos showing resilience and perseverance. We are incredibly proud of how they embraced the Forest School experience.

The **Hawks** have been very busy this week, as I have already mentioned. Here is a message from Miss Parry:

I am so proud of how all the children have adapted to the changes this week. Year 6 have worked incredibly hard despite SATs being a stressful time. They have shown real resilience and pushed themselves through many challenges this week. Year 5 have been great school ambassadors in a range of settings this week. They have adjusted well to the changes. They particularly enjoyed the sports day at Lycett and creating kaleidoscopes in their Science workshop!



Opening Worlds – Humanities Curriculum

Over the past few terms, we have been exploring ways to continue to enhance our curriculum design in the Humanities subjects, utilising research based on cognitive science. As a result, we have launched our Opening Worlds curriculum this term. This is a knowledge-rich Humanities programme for the teaching of History, Geography and Religion. At the heart of our new curriculum is the importance of immersing all children in rich vocabulary and subject knowledge that accumulates throughout the course of their Primary school journey. All children are pre-taught vocabulary, and this is practised through direct instruction, engaging story-telling and other activities, tailored to the needs of our pupils. This curriculum will assist the children in becoming global citizens by building their cultural capital in a range of contexts.

Key Stage 1 Spanish Club

One of our extra-curricular clubs for the Kingfishers class (Cl2) this term is Spanish Club. Mrs Magee, our Languages lead, is running a club with our Year 1&2 children to give them a taster of what they will be learning when they going into the Owl class (Cl3). Another aim of the club is to help them develop an early love of languages, which they are certainly showing in their sessions! Here is a update from Mrs Magee about what they have covered so far:

During Spanish club, the children have enjoyed learning how to greet each other and learning how to say the colours. We have had lots of fun even learning a song and taking part in an interactive game of bingo to help us remember our pronunciation.



Whilst there haven't been as many sessions for the club to meet yet, due to the bank holidays, the Spanish club will continue to the end of the Summer term so there is plenty more fun to be had. We look forward to hearing more about their learning over the next couple of weeks.

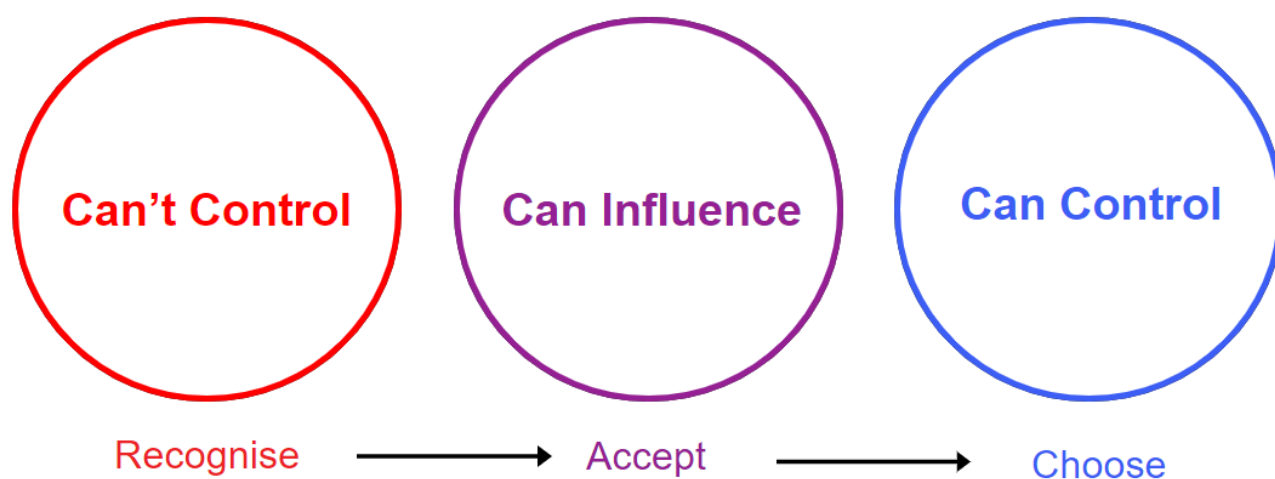


Outdoor Learning

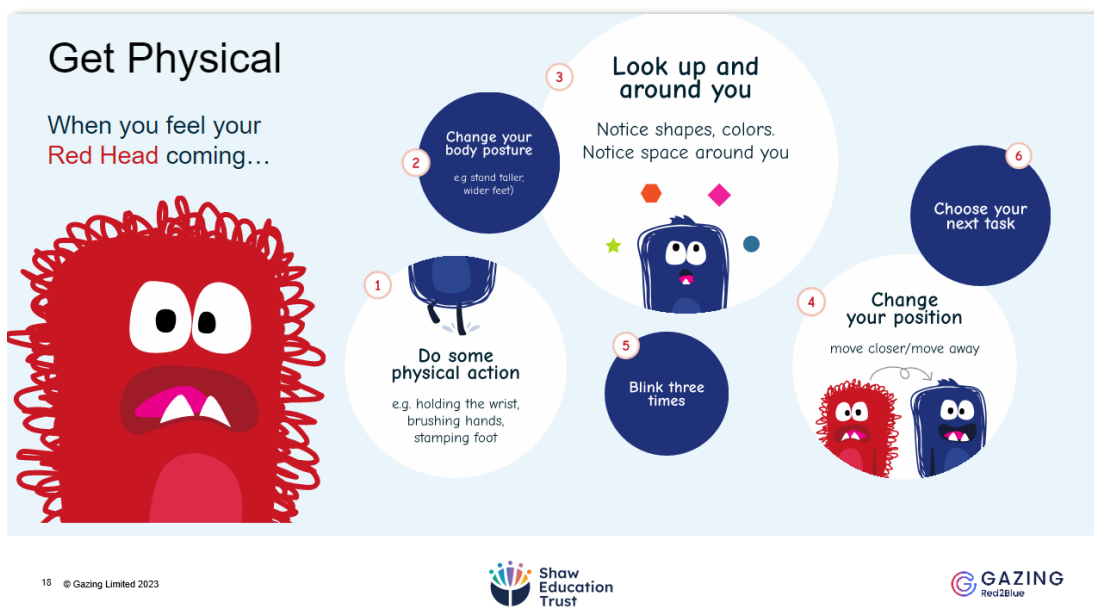
One of our areas of school improvement currently is around promoting self-regulation. Self-regulation is the process that your child's brain goes through that gives them the ability to control their behaviours and emotions in response to a particular situation. Mrs Davies and Mrs Panagi, our Mental Health Champions, have begun a formal training course with Gazing calling 'Red 2 Blue', an initiative that is being piloted across schools in the Shaw Education Trust to support children and adults to develop and main positive

mental wellbeing. Gazing is a company that helps people perform under pressure and get better at what they do. Gazing concepts have been delivered to people in a range of sectors including Business, Sport, Education, Healthcare, Military and Police. 'Red 2 Blue' is about recognising when we are in a 'red' head state, where our attentions are often diverted and focusing on things we can't control, to accepting the things we can influence and choosing to focus on the things we can control – our 'blue' head state.

Start where you are.... move



Part of moving to a blue head state is by recognising strategies we can use to help us. This is something we are going to be working with our children on next half term once Mrs Davies and Mrs Panagi have completed their training and have disseminated it to staff. We will be creating a pupil advisory group, who will be working with children in other local primary schools, to help us to launch the initiative in our school so that it meets the needs of our pupils.



Here is a message from our coaches:

Recently, we have had the fantastic opportunity to participate in some new training with SET. This is a brand-new initiative to boost mental health and well-being and helping our children to self-regulate using a universal language to communicate feelings and putting strategies in place. This will help children to go from 'red' head to 'blue' head. Once we have finished our training, we will be sharing what all this means and how you can be involved.

Mrs Davies and Mrs Panagi

Another area of school improvement includes developing our outdoor areas so that they promote learning and self-regulation too. Last week, a working party of children came together to generate ideas about how we could help them with this. Here is a message from Mrs Hall on what they got up to:

As part of the school's plan to improve the outdoor provision, we have asked a group of children from classes 3 and 4 to develop a Playground Charter. The Charter is a set of expectations that the children have of themselves, to ensure that the playground is a safe and fun space for all children as well as a place where children can develop the ability to self-regulate. Some of these children are currently making colourful A3 posters to display the expectations. We will share the Playground Charter with you very soon.

Owls Class - Concert at Victoria Hall, Hanley on Thursday 22nd June 2023.

Just a reminder that tickets have already gone on sale for this concert. Parents are invited to come to the performance at **10:45am-11:45am**. Tickets are on a first come, first served basis. You can purchase your tickets on the link <https://www.trybooking.co.uk/CHRP> which has been organised by the Entrust Music Services. A more detailed letter about this event has been sent out via Parentmail a few weeks ago.


School Life

To find out more about life at The Meadows, please follow us on Twitter @primary_meadows. This is a great way to find out what your children have been learning and for us to signpost events coming up. You can help us to raise the profile of our school in the local community too by liking and sharing our tweets. 😊 We would really like to increase our community's footfall on our account – don't forget to view and like our posts. We are currently looking at other ways to use social media with our school community so that you can keep updated about life in school.

For the moment, here are a few snapshots of recent activity at school:

The Meadows Primary School
@primary_meadows

KS1 Science Club investigated whether taller people have longer arms and legs. They used a data entry programme to compare their results and draw conclusions.




5:58 PM · May 11, 2023 · 56 Views

View Tweet analytics **Promote**

1 Like

The Meadows Primary School
@primary_meadows

Miss Parry is taking part in Race For Life this year at Trentham Gardens. This is a cause close to many of us! If you would like to sponsor her, details can be found here:



fundraise.cancerresearchuk.org
Natalie's Giving Page

Cancer is happening right now, which is why I'm taking part in a Race for Life 5k to raise money and save lives. 1 in 2 people will be diagnosed with cancer i...

8:44 AM · May 3, 2023 · 128 Views

The Meadows Primary School
@primary_meadows

The creativity is flowing in Recycled Art club.



4:16 PM · May 3, 2023 · 131 Views

View Tweet analytics **Promote**

3 Likes

The Meadows Primary School
@primary_meadows

Photo spam of our multi-sports morning.



5:12 PM · May 9, 2023 · 90 Views

View Tweet analytics **Promote**

3 Likes

Have a lovely weekend,

All the best,

Mrs Kuffour

Personal Possessions

I would like to remind all our school community of the following:

The storage of any personal property or possessions or, where pupils bring in personal property or possessions onto the school premises it is at the pupil's and parent's own risk and the school will not be liable for any loss or damage to personal property or possessions.



The Shaw Education Trust Limited is a company limited by guarantee, registered in England (no 09067175)
Registered address: Shaw Education Trust, The Lodge, Wolstanton High School, Milehouse Lane, Wolstanton, Newcastle-under-Lyme,
Staffordshire, ST5 9JU

The details of our academies registered as business names can be found at www.shaw-education.org.uk